



Briefing

LOMBARDIA
2004

**International Competition for
Military Patrols**



1. OUTLINE OF THE EXERCISE

LOMBARDIA 2004
International Competition for Military Patrols



Outline of the Exercise: AIM - THEME

■ AIM

- Update and maintain the professional skills of the reserve officers, as well as the capability to rejoin the active units, through the training and the physical activity.
- Maintain strong relationships between reserve and active officers of all the armed forces and para-military forces.
- Exercise the officers, non-commissioned officers and soldiers of the reserve in the offensive operations, by attributing them technical and operational tasks

■ THEME

- The company team in the attack



Outline of the Exercise : TYPE- ZONE-D.E.

■ TYPE

- Operative exercise, with evaluation, continued, daytime, blank, on the field, with simulated enemy. Total duration 18 hours on a distance of 21 kilometers and a height difference of 1000 meters.

■ ZONE

- Mountain and rough terrain in the mountain area between the East bank of Lake Maggiore and the heights around the town of Luino.

■ DIRECTION OF THE EXERCISE

- President of the regional district UNUCI Lombardia.



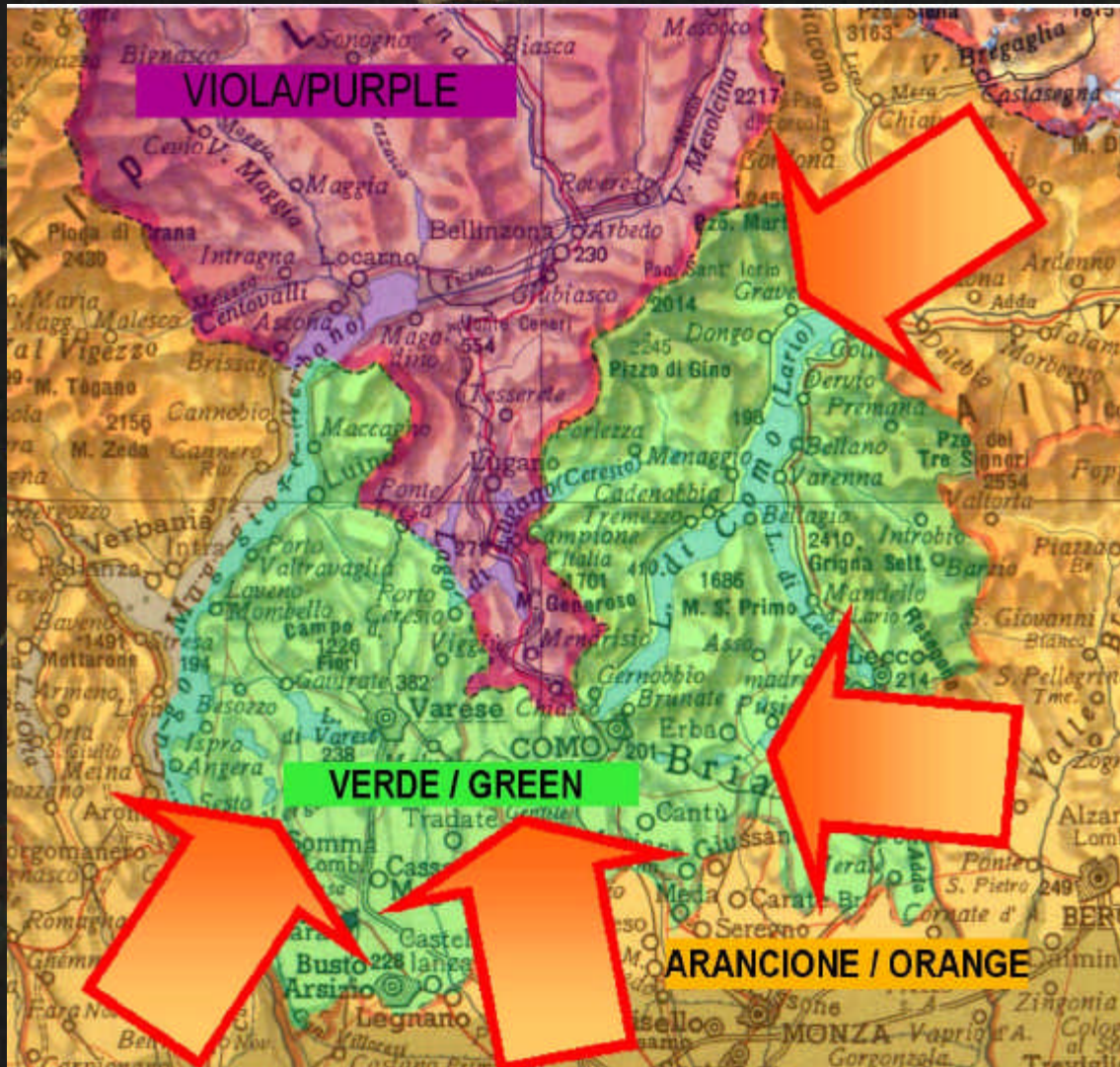
2. OPERATIONAL SETTING

LOMBARDIA 2004
International Competition for Military Patrols



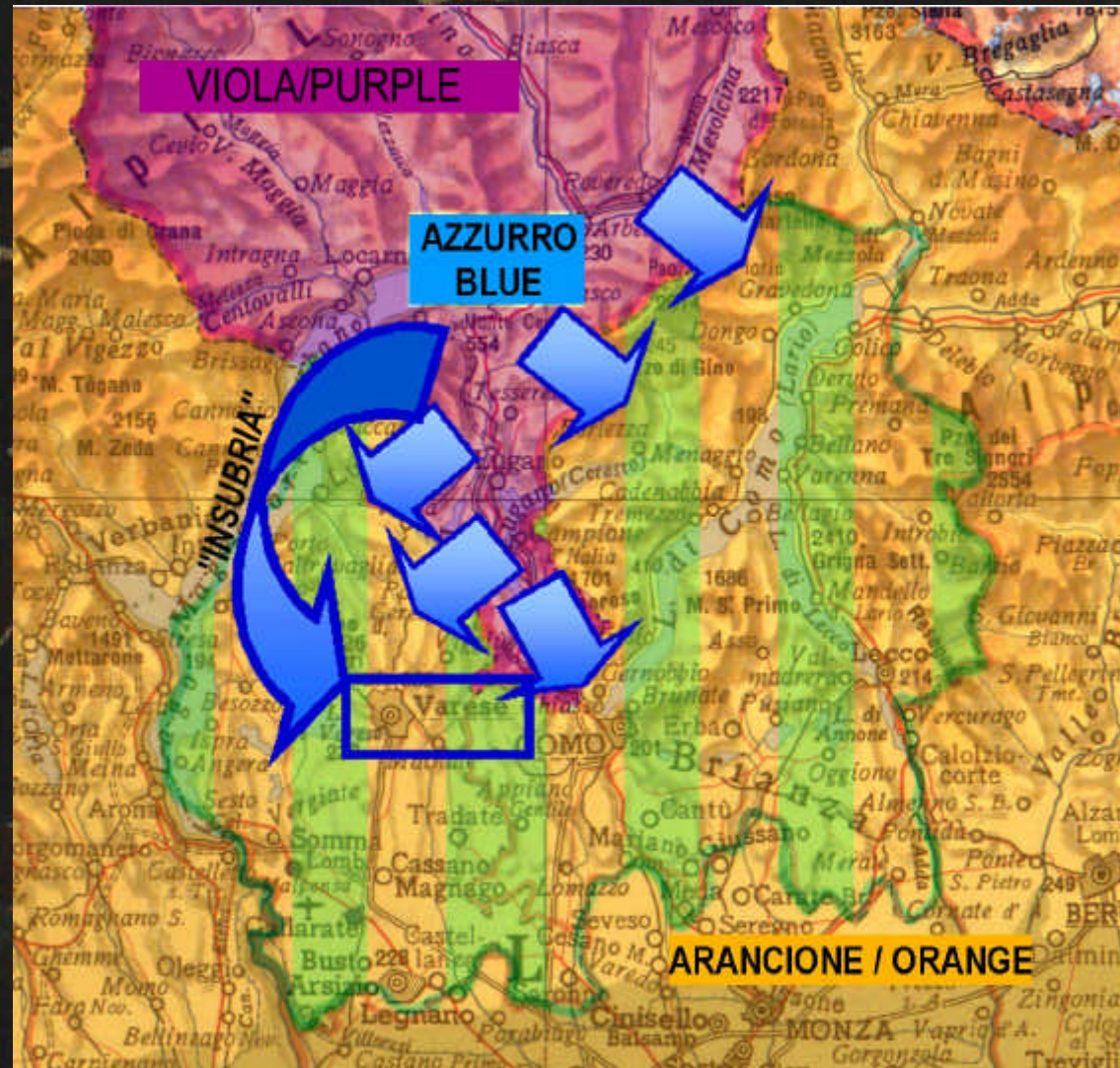
Operational Setting: ASSUMPTIONS (1)

- The ORANGE Nation invaded the territory of its neighbor country GREEN
- The international community In accordance with the UN resolution intervenes with a multinational expeditionary corps .



Operational Setting: ASSUMPTIONS (2)

- The NATO ordered the Rapid Deployable Corps CELERE (Blue party) to intervene to restore the national rights of GREEN party.





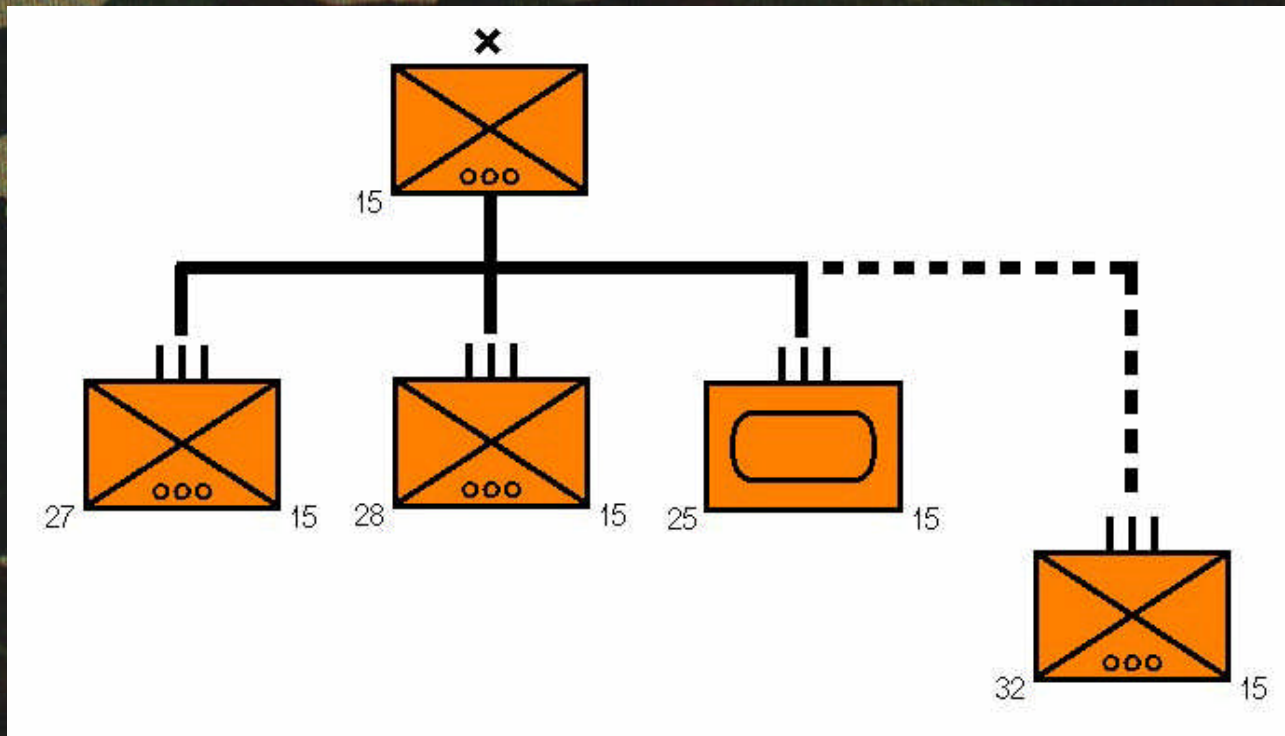
Operational Setting: ASSUMPTIONS (3)

- NBC: The Orange party owns chemical and biological weapons
- AIR FORCE: Blue party air superiority
- ARMORED FORCES:
 - Orange Party: weapons systems made in Russia
 - Blue party: equipments of Italian Armed Forces
- GUERRILLIA: Limited irregular forces activity supporting Blue party



Operational Setting: SITUATION (1)

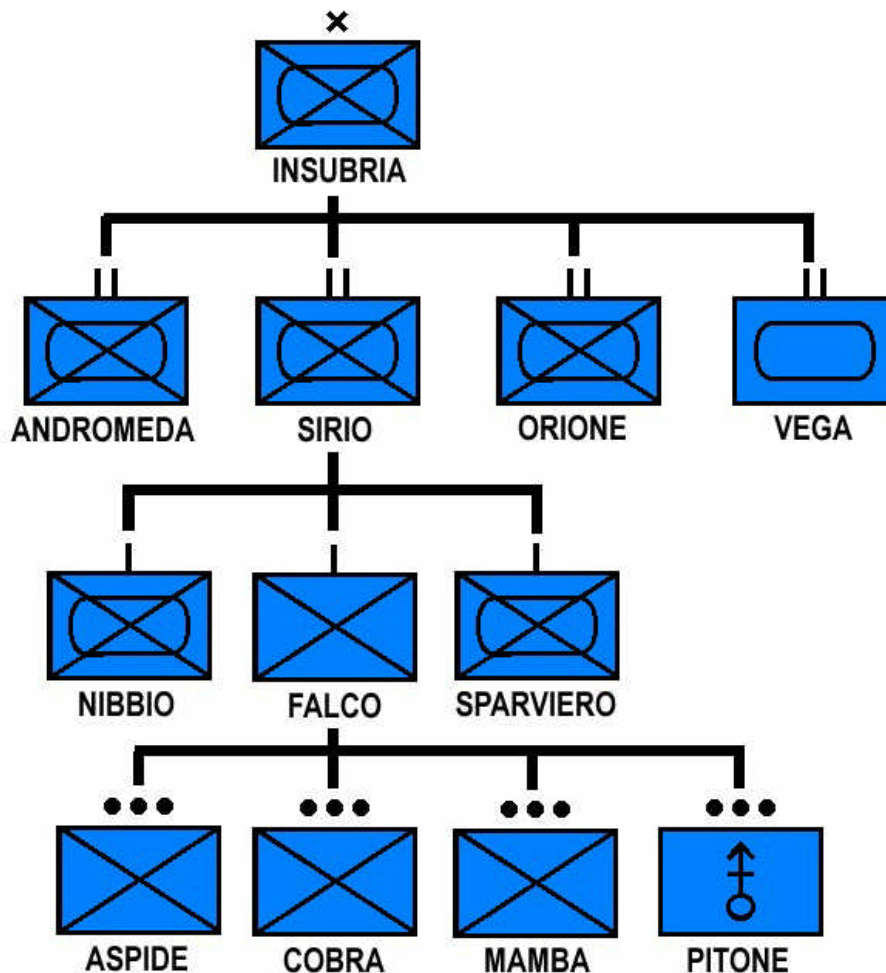
ORANGE PARTY TASK ORGANIZATION

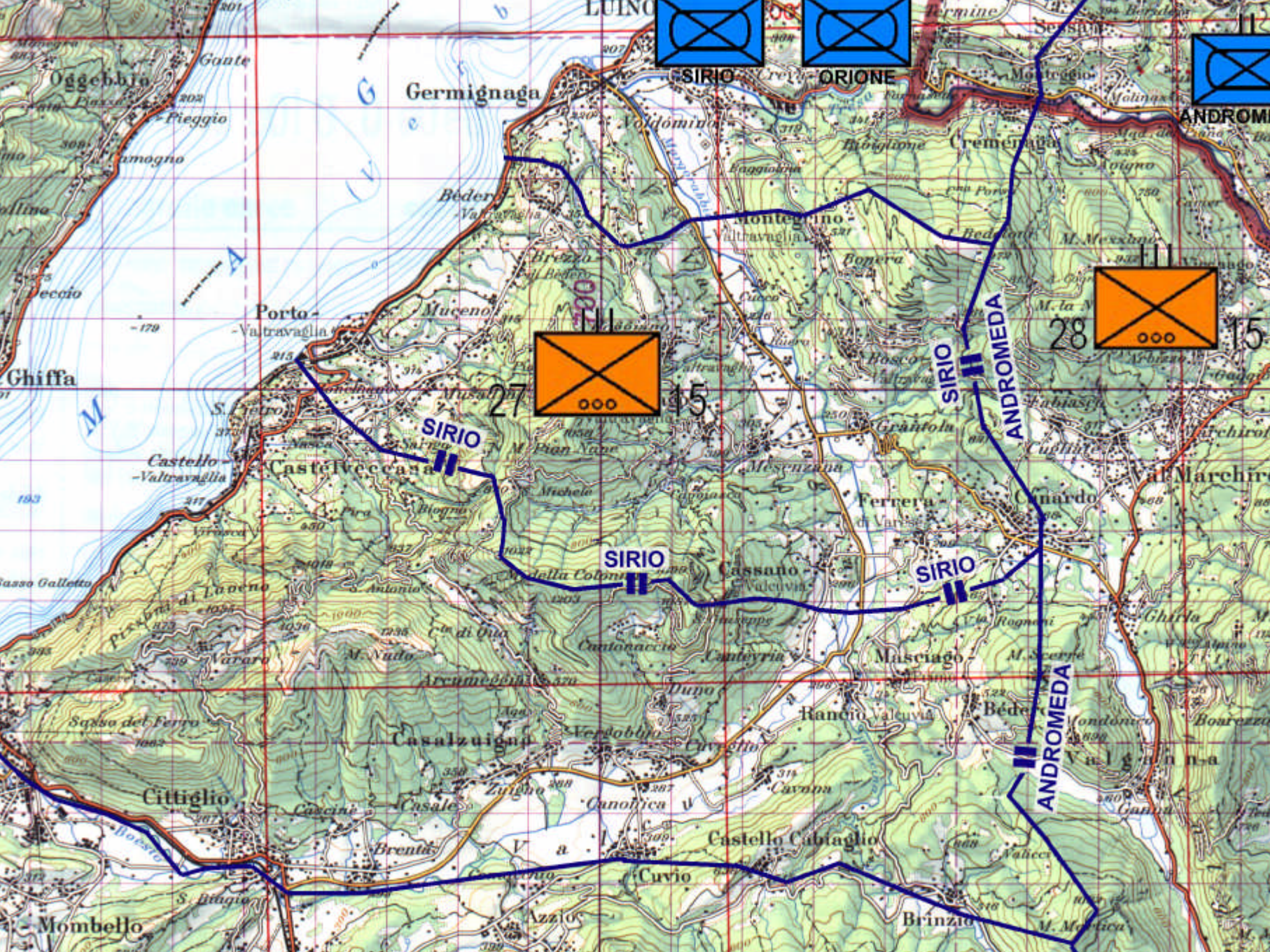




Operational Setting: SITUATION (2)

BLUE PARTY TASK ORGANIZATION







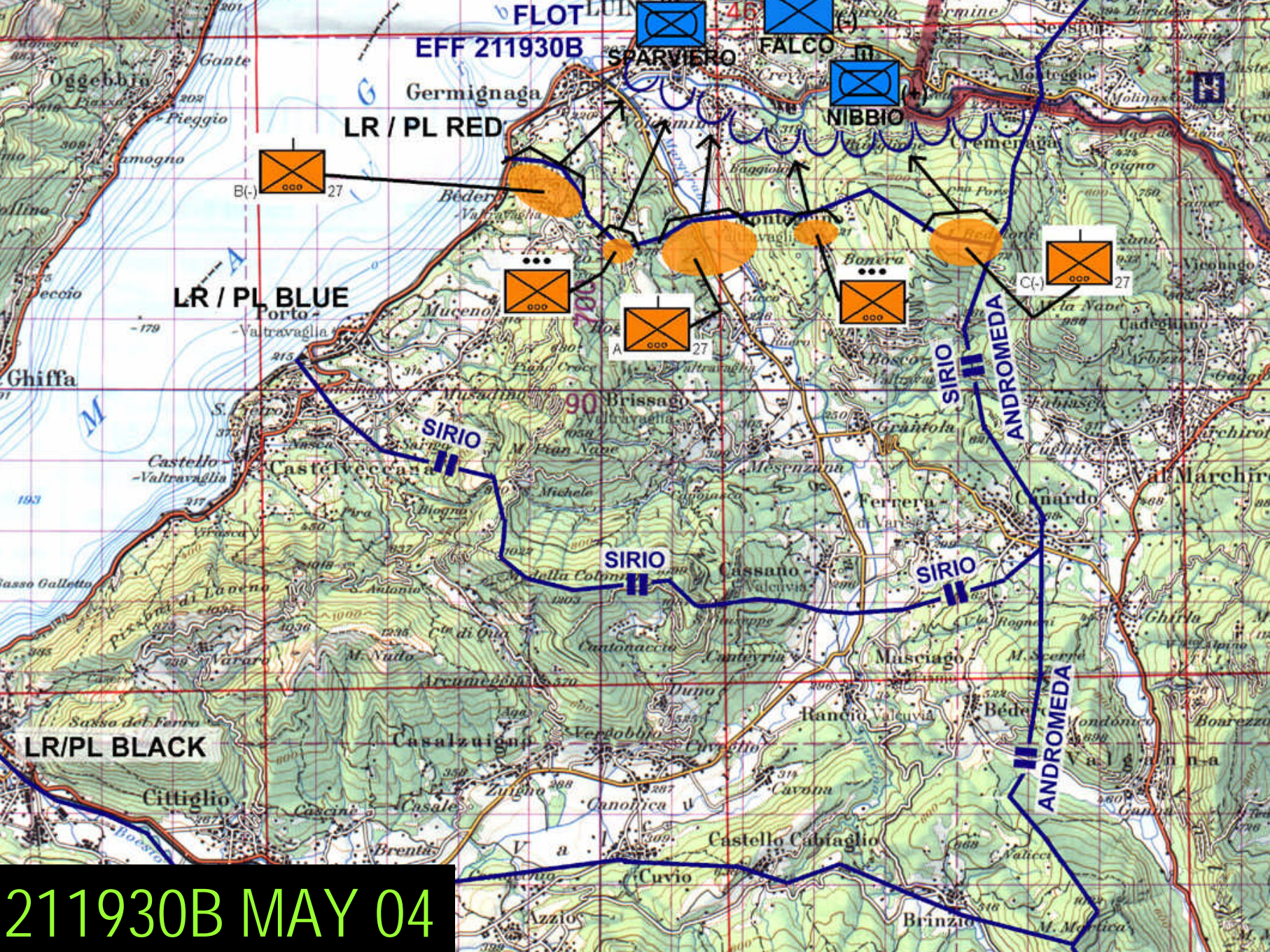
OPERATION ORDERS

LOMBARDIA 2004
International Competition for Military Patrols

LR/PL BLACK

211930B MAY 04

211930B MAY 04

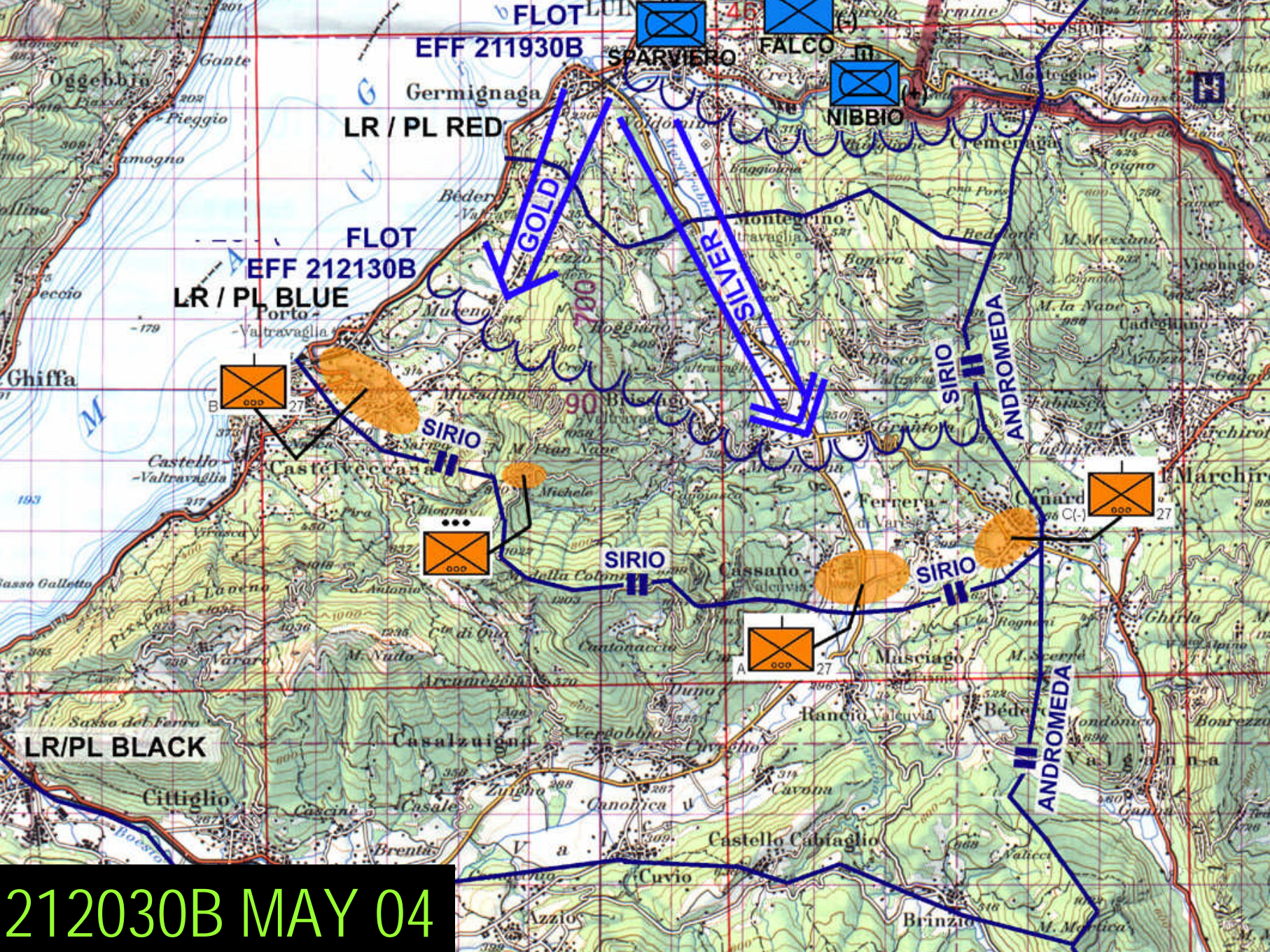


LR / PL RED

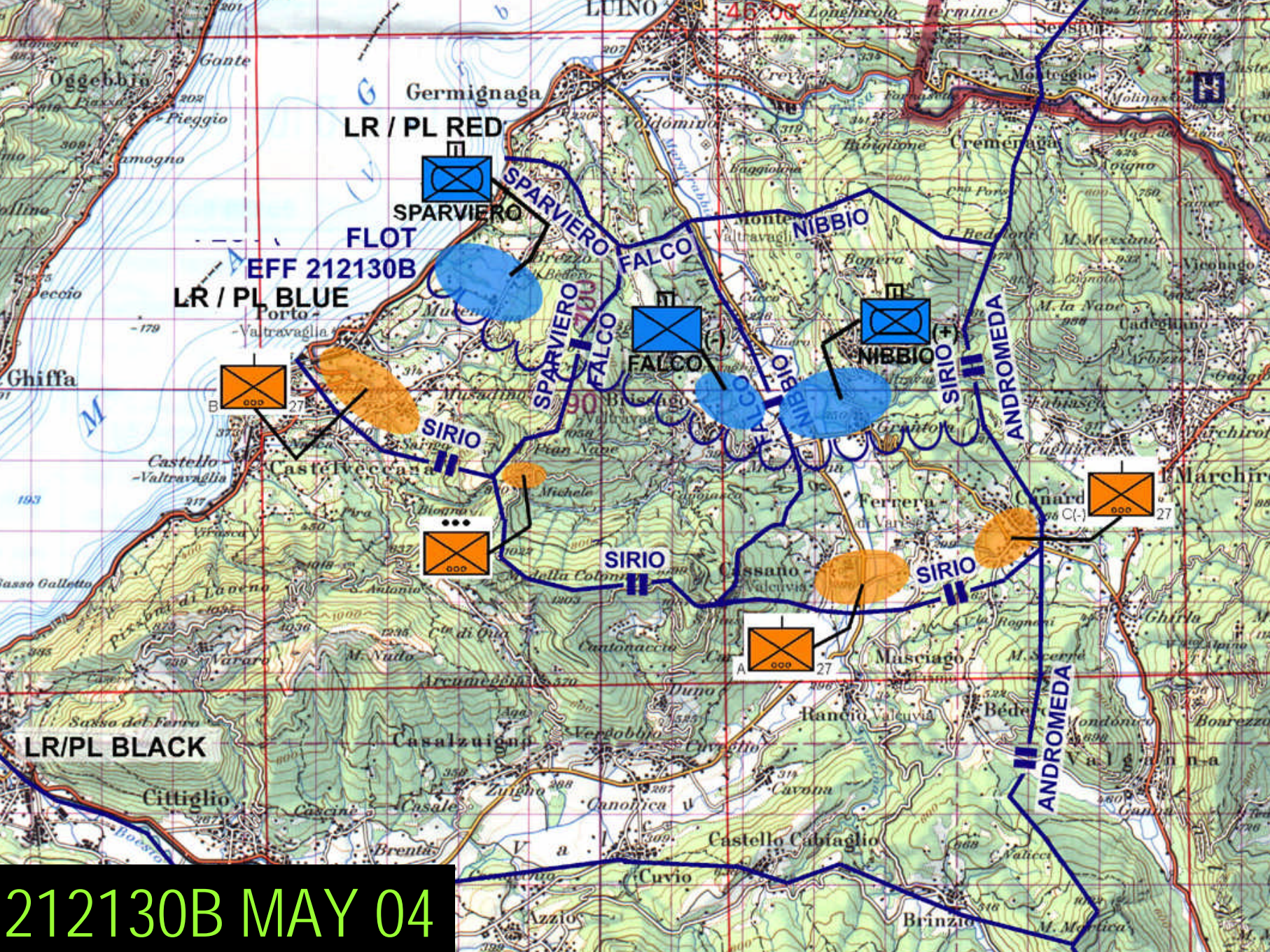
LR / PL BLUE

LR/PL BLACK

212000B MAY 04



212030B MAY 04



LR / PL RED

EFF 212130B
LR / PL BLUE

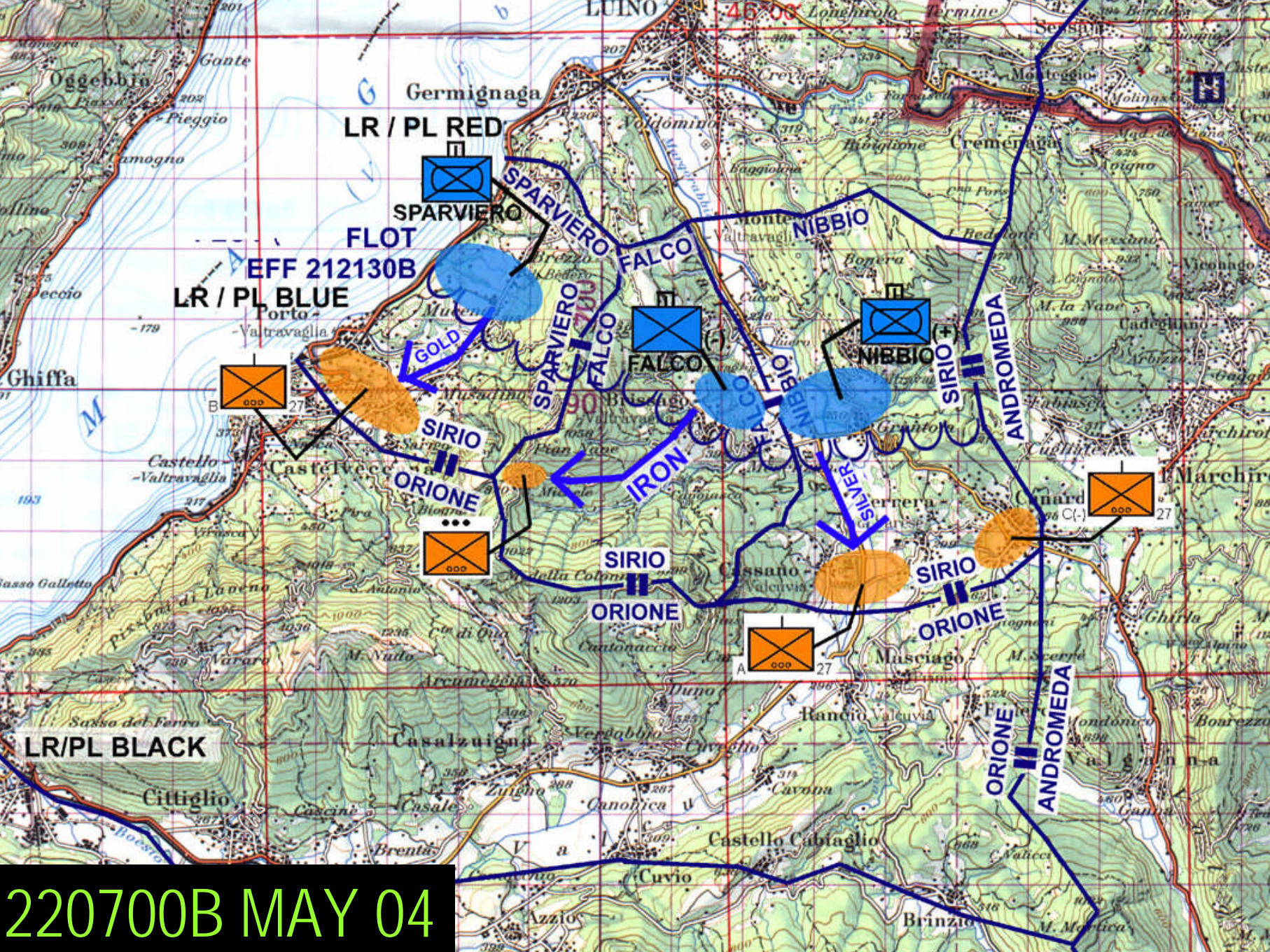
LR / PL BLACK

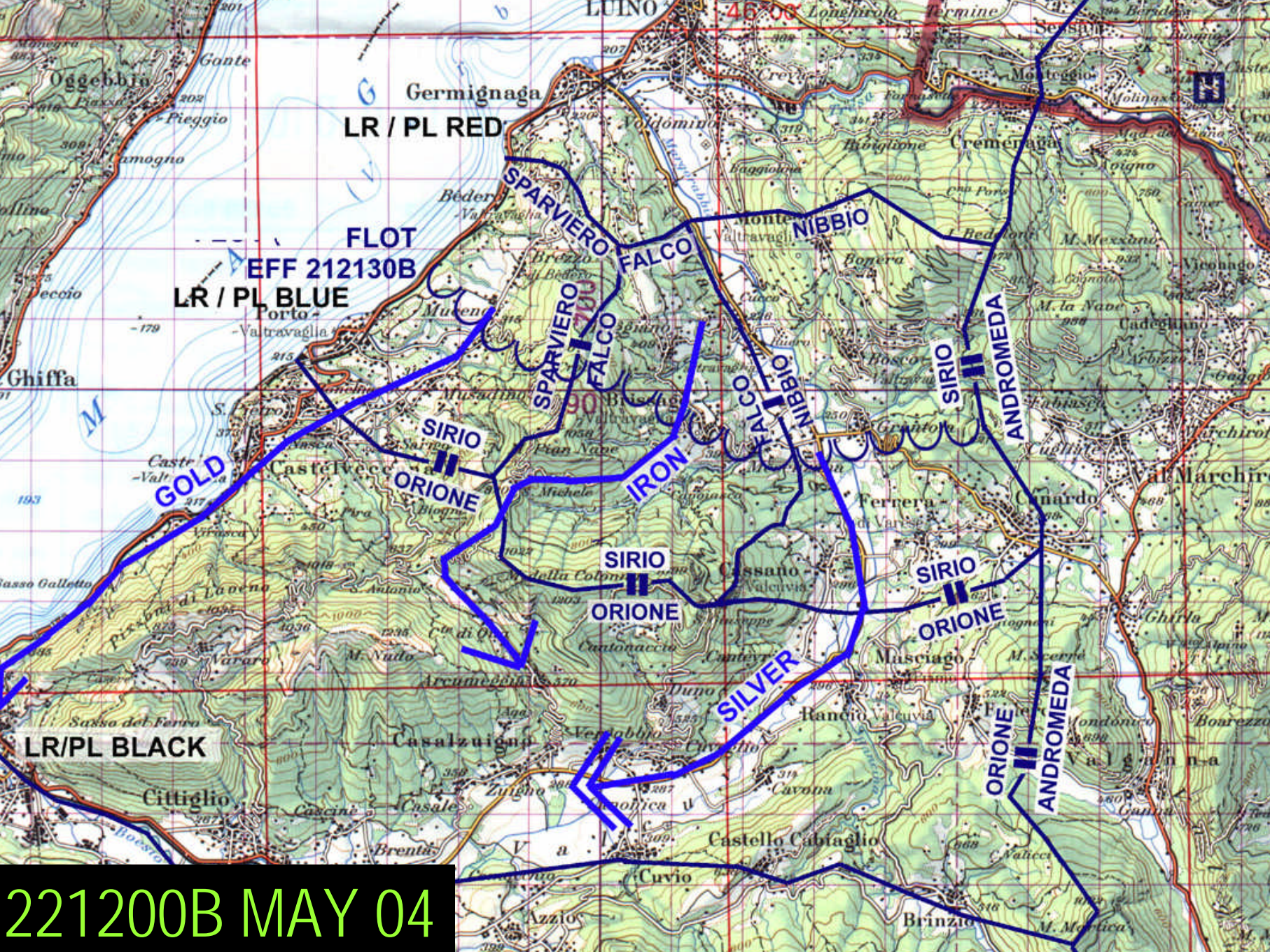
212130B MAY 04



MISSION: Commander's Intent

LOMBARDIA 2004
International Competition for Military Patrols





FLOT
EFF 212130B
LR / PL BLUE

GOLD

LR/PL BLACK

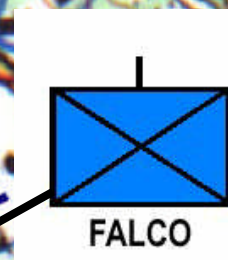
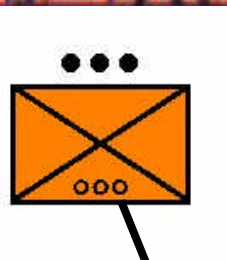
221200B MAY 04



MISSION: Company Team FALCO

LOMBARDIA 2004
International Competition for Military Patrols

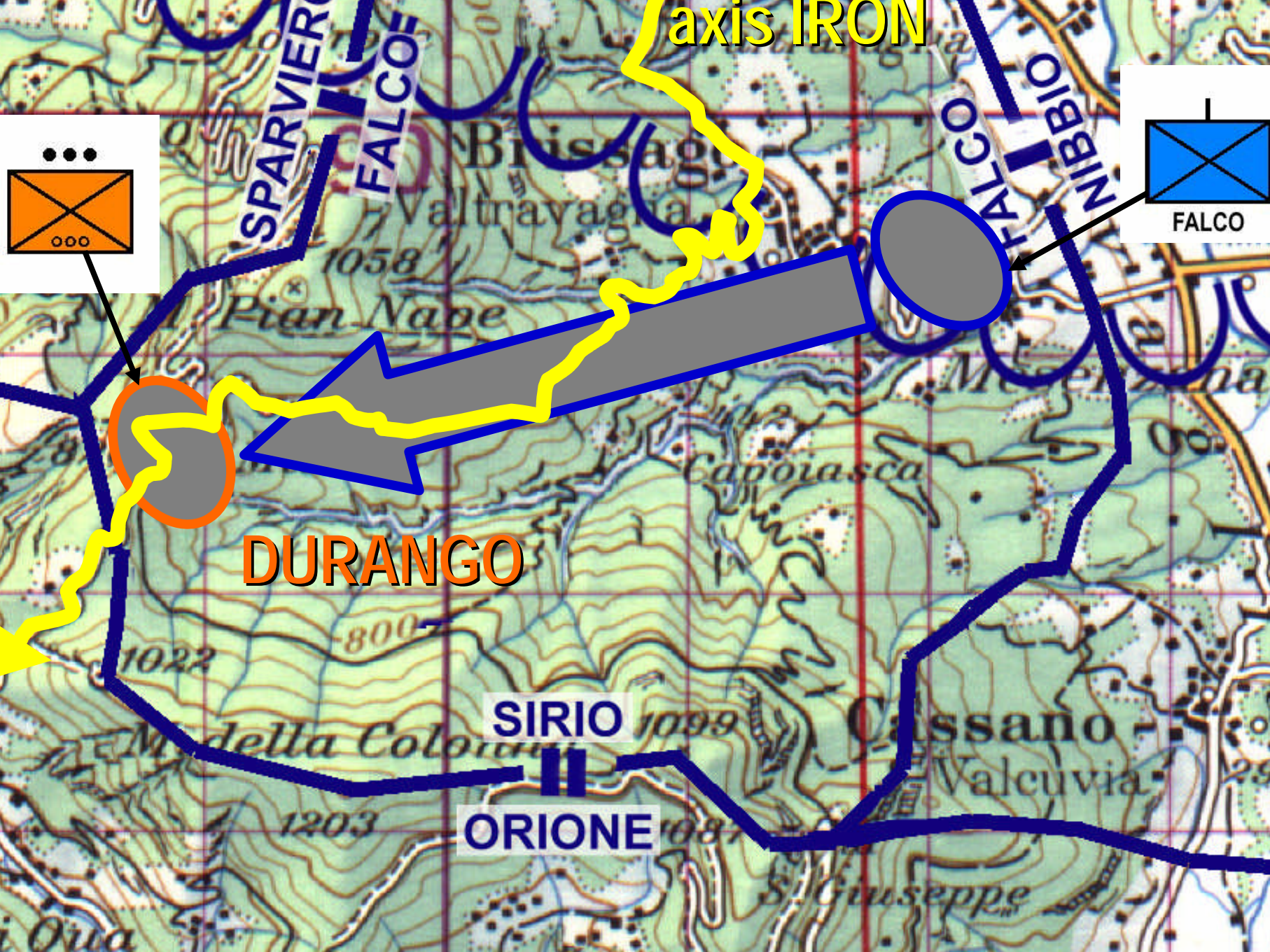
axis IRON



DURANGO

SIRIO

ORIONE



axis IRON



SPARVIERO
FALCOE

GHOST

FALCO
NIBBIO

DURANGO

SIRIO

ORIONE

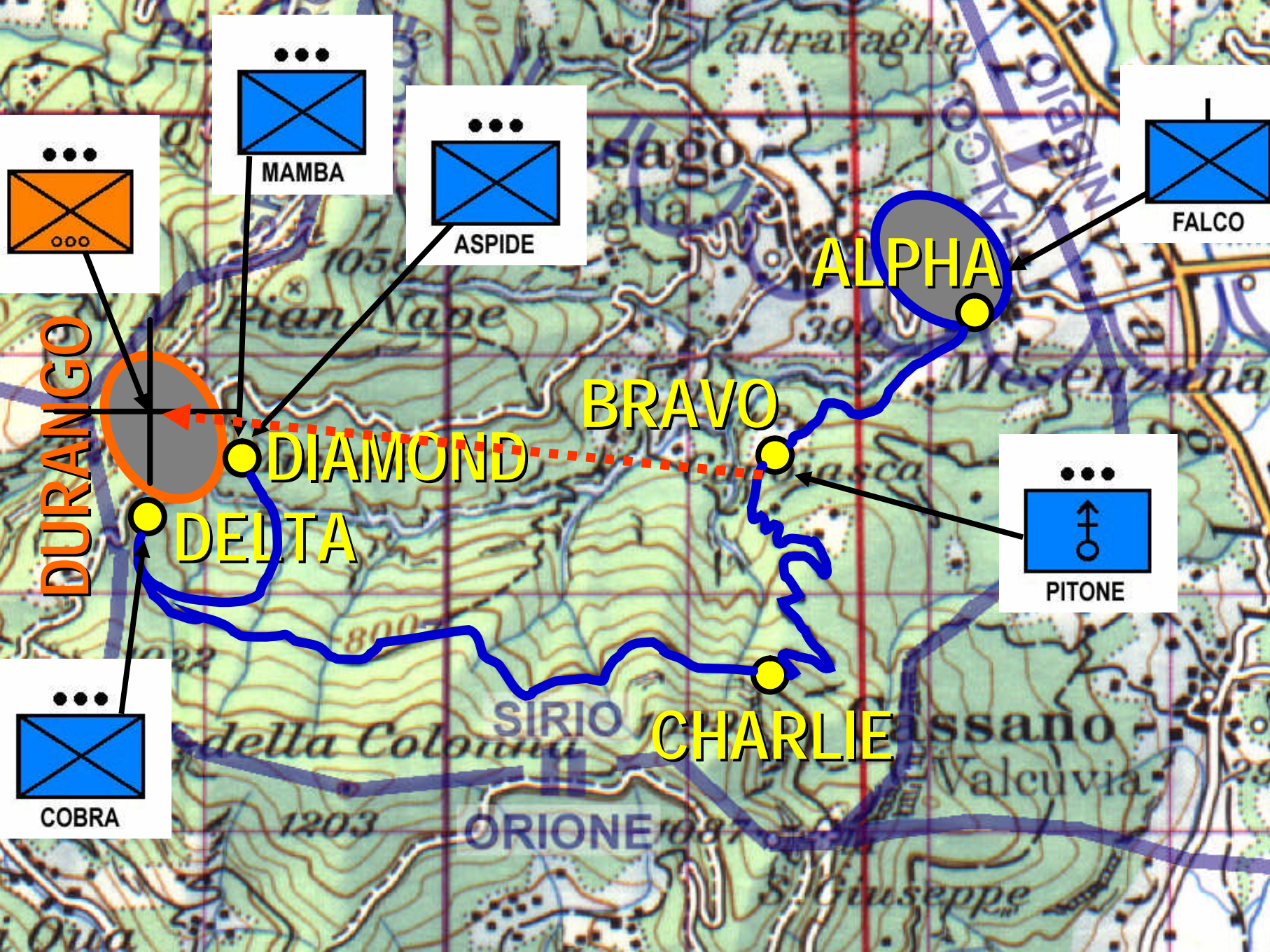
GOLF





EXECUTION: Concept of Operations

LOMBARDIA 2004
International Competition for Military Patrols



DURANGO

MAMBA

ASPIDE

FALCO

ALPHA

BRAVO

DIAMOND

DELTA

PITONE

COBRA

CHARLIE

SIRIO

ORIONE

Valtravaglia

sago

ghia

Pian Vape

Mesenzana

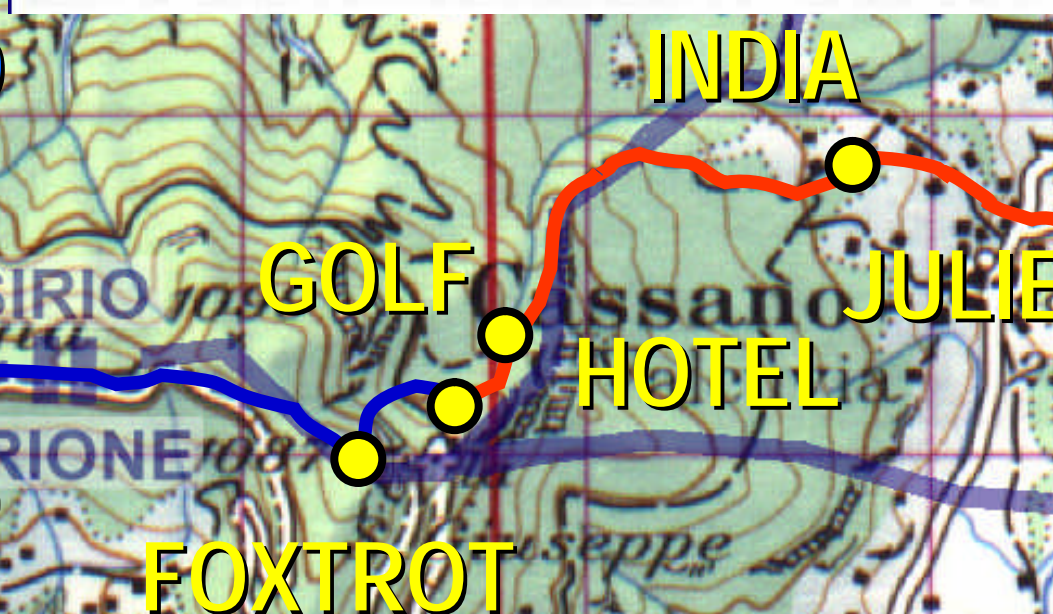
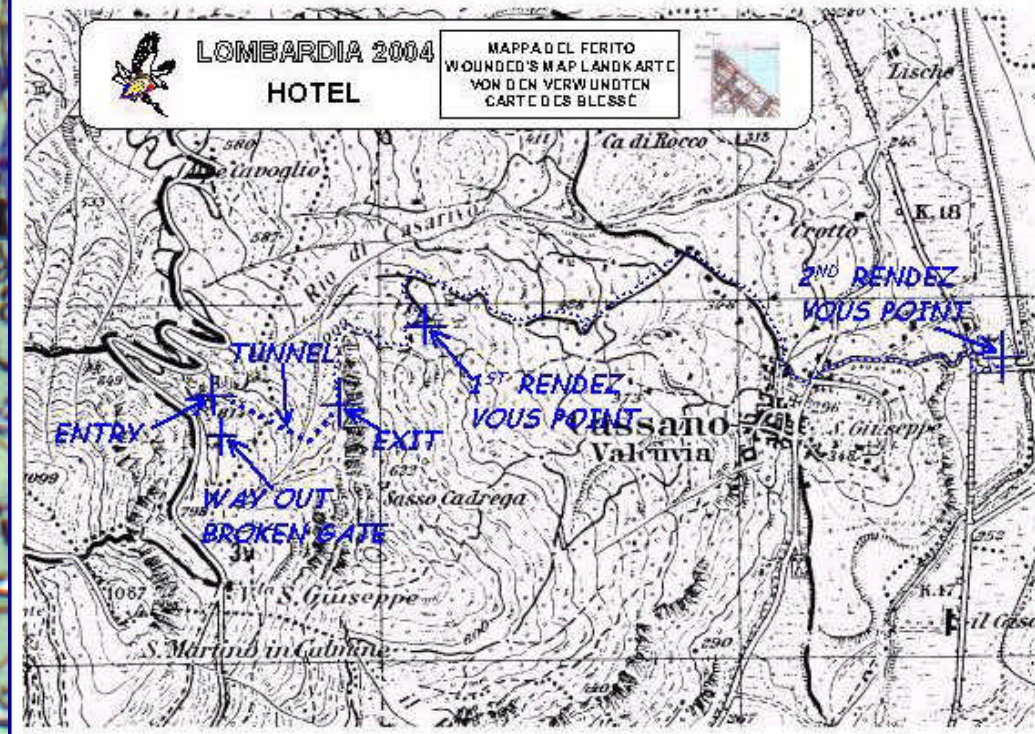
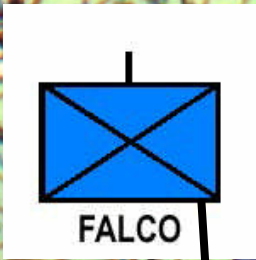
asca

della Colonna

Cassano

Valcuvia

S. Giuseppe



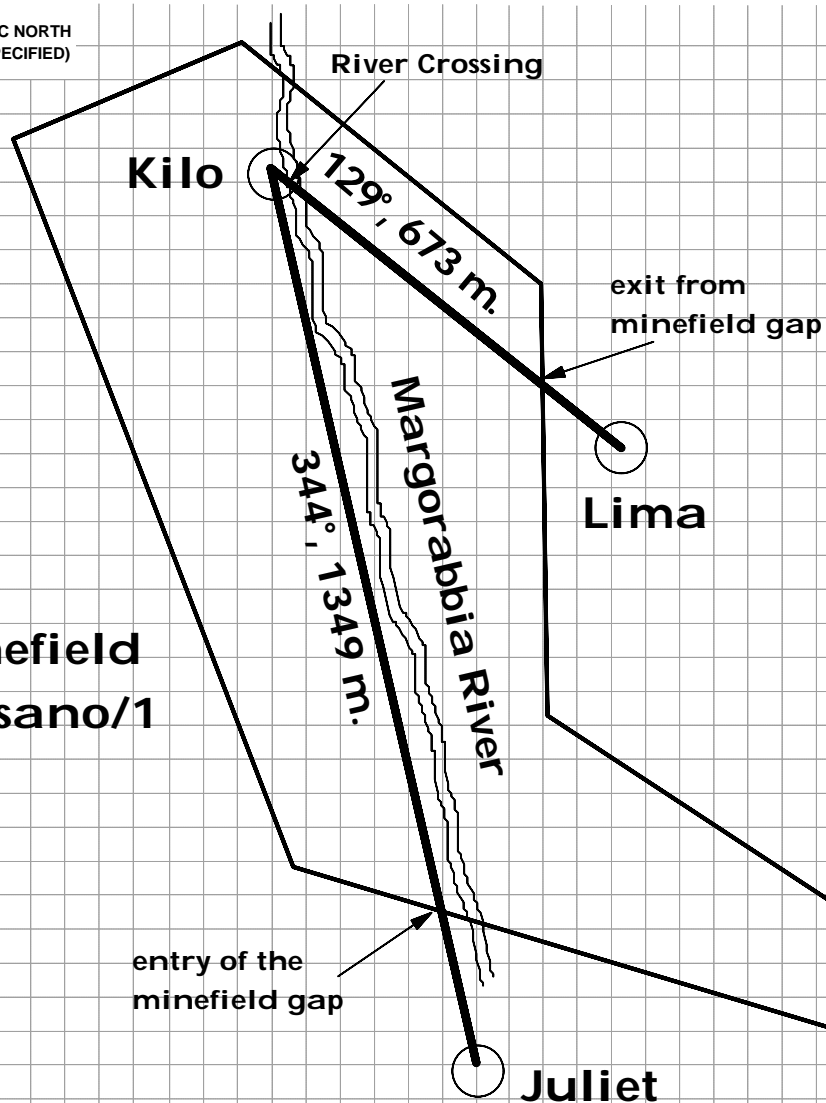
SCALE: 1:10000

(ANGLES ARE IN DEGREES RESPECT MAGNETIC NORTH
AND DISTANCES ARE IN METERS, UNLESS SPECIFIED)



Angles given from
Grid North

Minefield
Cassano/1



brigata insubria
31^ Cp. Genio Guastatori
Translated from
Orange party original
minefield registration form

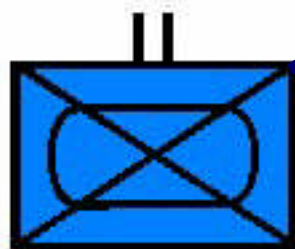
Secret

(CLASSIFICATION WHEN COMPILED)

SIGNATURE

NOVEMBER

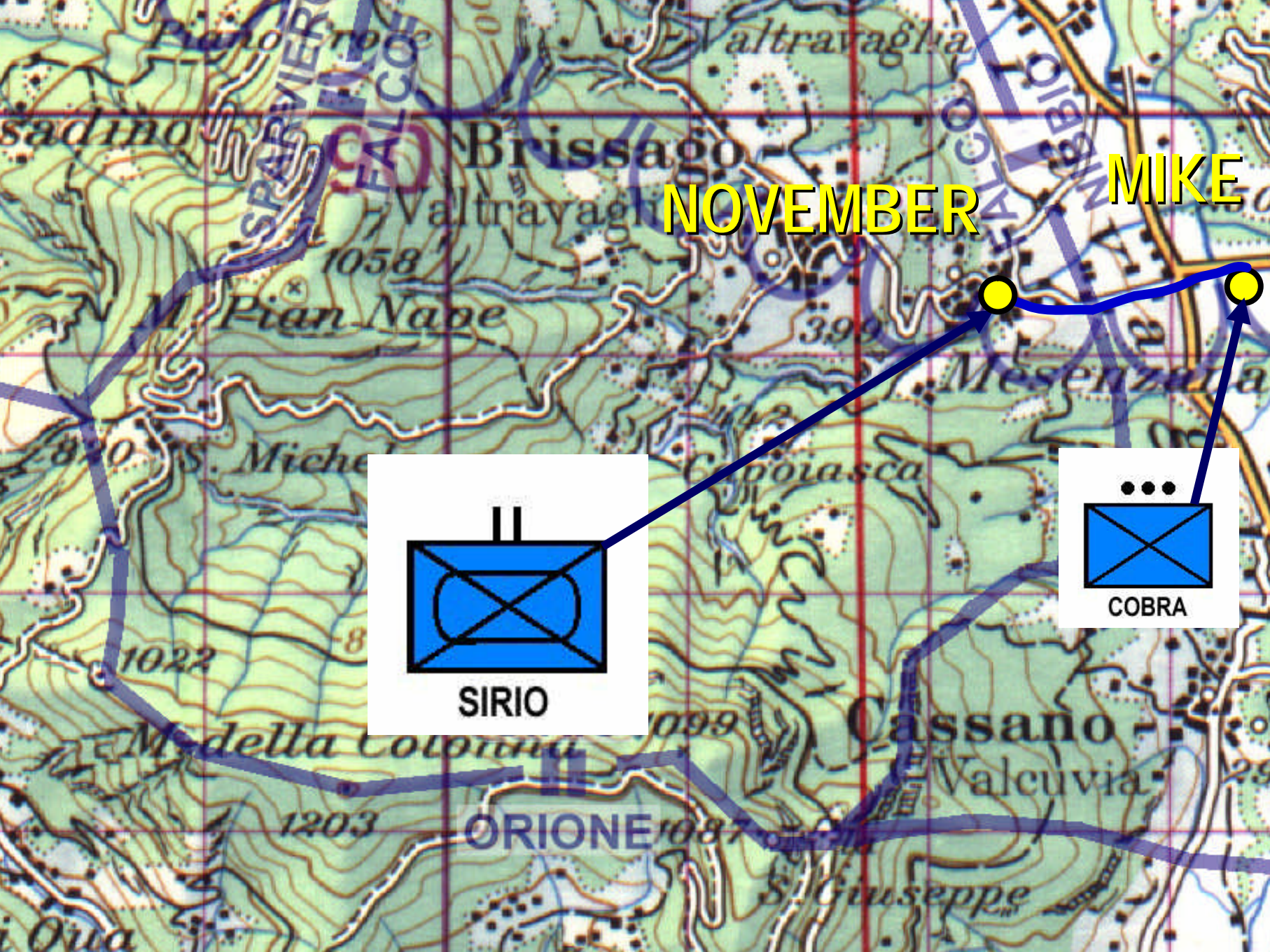
MIKE



SIRIO



COBRA





3. ORGANIZATION OF THE DIRECTION OF THE EXERCISE

LOMBARDIA 2004
International Competition for Military Patrols



Organization of D.E. SAFETY ISSUES

- One mobile phone per patrol is mandatory,
 - always switched ON. Leave your number.
 - Emergency numbers are reported on the check form
- In the event of an emergency you may also contact the nearest trial.
- Move ONLY on roads and trails. Never leave the indicated itinerary. Never cross forbidden areas.
- Do not enter fortifications unless specifically instructed to do so. Inside fortifications, move carefully (watch your head and slippery ground)
- There is no "enemy" personnell ALONG the path but only WITHIN some trial. Violent physical contact is forbidden.