



LOMBARDIA

2009

Gara Internazionale
per Pattuglie Militari
International Military
Patrol Competition



BRIEFING



LOMBARDIA 2008

**Gara Internazionale Per Pattuglie Militari
International Military Patrol Competition**

2

OPERATIONAL SETTING INQUADRAMENTO OPERATIVO

**BRIEFING OPERATIVO
OPERATION BRIEFING**



Operational setting

Internal riots started in Bremboland, a nation outside NATO.

People's Party of Bremboland (PPB) drove several acts of violence on both locals and foreign citizens.

PPB controls several villages inside the territory of Bremboland

Regular government of Bremboland is unable to guarantee European citizens safety, and declared to allow an evacuation operation.

PPB show their will to use the foreign civilians as hostages, in order to force the European nations to suspend any intervention of the United Nations.





Operational setting

After the failure of a diplomatic solution of the conflict, the NATO countries committed a multinational expeditionary force named NEFB (NATO Evacuation Force in Bremboland), to rescue their citizens with a decisive military intervention.

The embassies alerted their citizens, by ordering to assemble in the prescribed evacuee assembly areas and to be prepared to return to their own countries.

The airborne brigade INSUBRIA has been ordered to take the command and control of the NEO (non-combatant evacuation operation) assigned to the multinational force.

The neighbour country Lambrostan (west) is a friend of the legitimate government of Bremboland and it is ready to support and provide forward bases to the NEFB to execute its task.



Operational setting

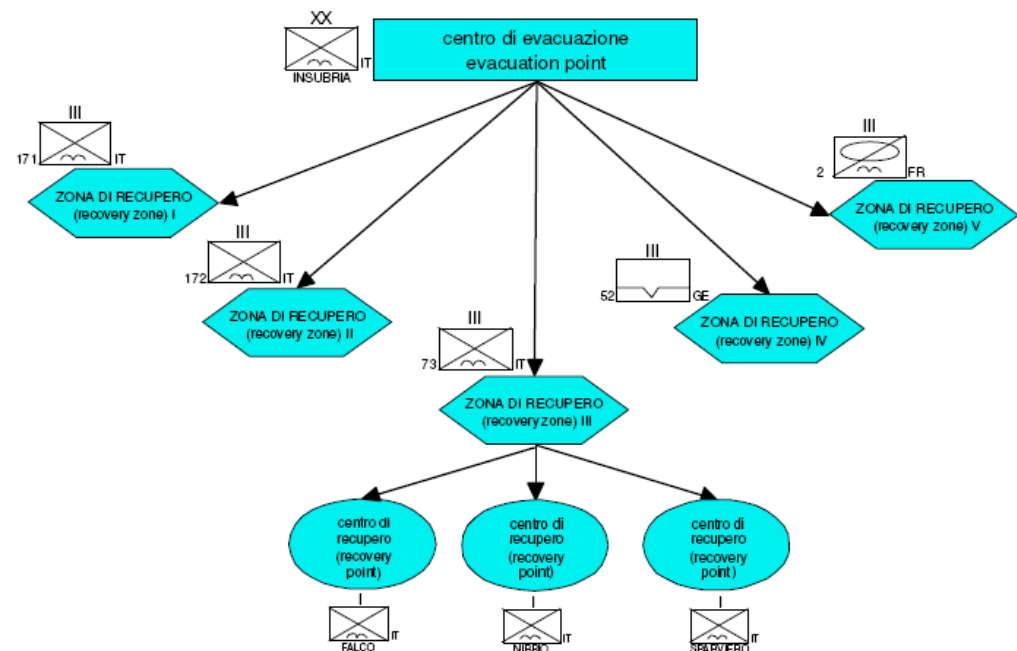
The PPB forces is reported to prepare arresting of European citizens and collecting them in concentration camps

The brigade INSUBRIA started its deployment organising the evacuation point (embankment area in the airport of the Lambrostan).

The brigade organised five recovery zones, each one under responsibility of a regiment.

The 73th airborne regiment is responsible of the recovery zone III, and subordinate assembly areas has been assigned to the company teams FALCO, NIBBIO and SPARVIERO.

Company teams shall deploy the search squads to the reception centers defined by the embassy, to pick up the civilians and safeguard them





LOMBARDIA 2008

**Gara Internazionale Per Pattuglie Militari
International Military Patrol Competition**

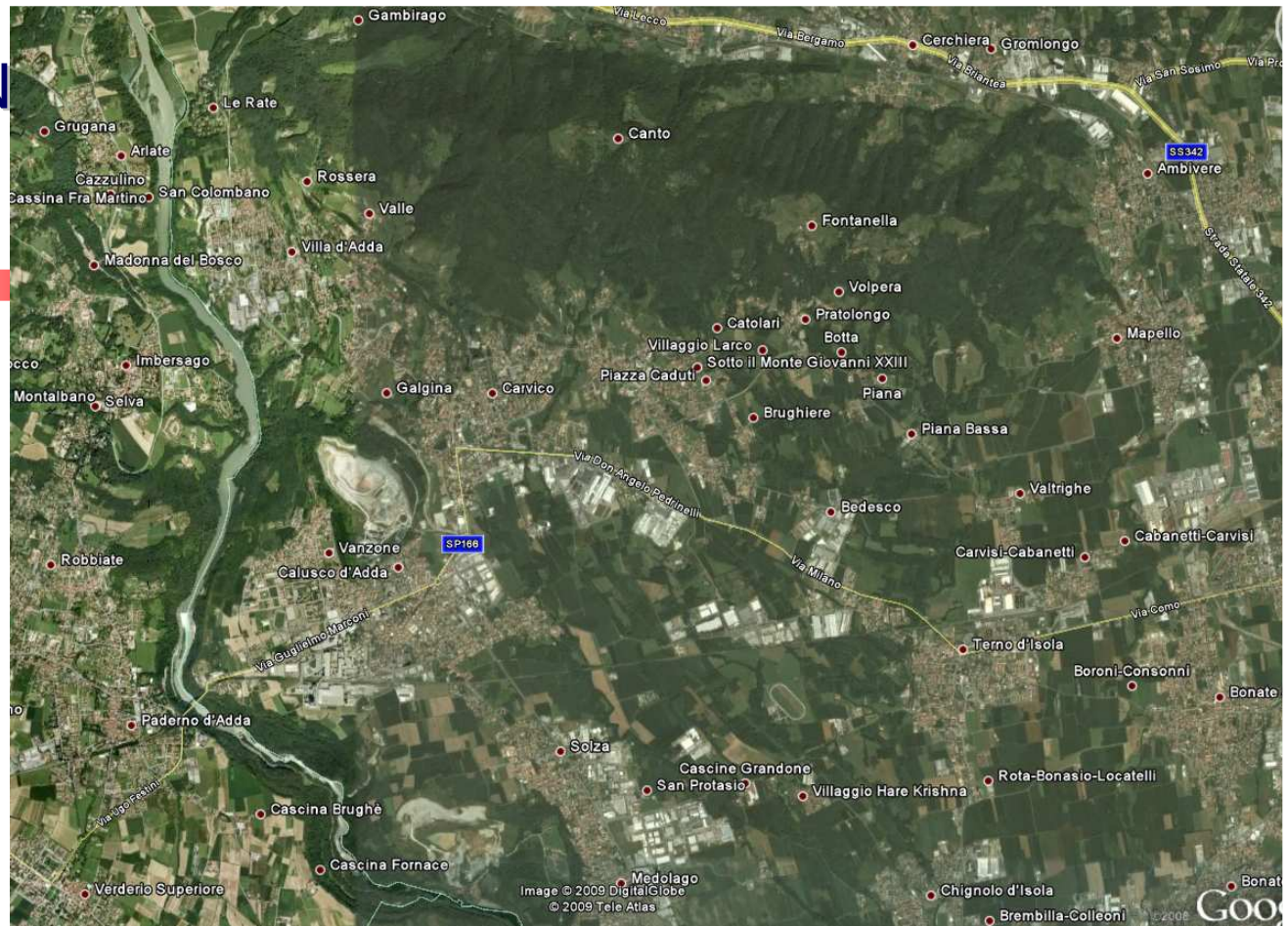
2.1

OPERATION ORDER ORDINI DI MISSIONE

**BRIEFING OPERATIVO
OPERATION BRIEFING**



OPERATION ORDER: SITUATION



Insurgent elements of the People's Party of Bremboland (PPB) are reported in Terno d'Isola, Calusco e Villa d'Adda.

They show increasing activity, and hostile acts against foreign citizens is most likely.



OPERATION ORDER: SITUATION

Insubria Brigade operates Evacuation Center SILVER of the in the area of Lambrostan international airport.

Assembly area is set in the host nation Bremboland.

Evacuees have been contacted by the Embassy and they are ready to be rescued at assigned reception centers.



OPERATION ORDER: SITUATION

Company FALCO shall

- reach the assigned evacuee reception points**
- collect the evacuee and escort them to the assembly area
IRON located in MEDOLAGO**

**The evacuees shall be subsequently moved to the Evacuation
Center SILVER in Lambrostan.**

**Recovery actions shall continue until all the Italian citizens
indicated by the Embassy are evacuated**



OPERATION ORDER: SITUATION

The exercised patrol COBRA shall

- **insert in the area of operation through airdrop on DZ (drop zone) BEAVER.**
- **Assembly point C**
- **follow the creek “La Buliga”, pass the point D, then continue along the stream to reach the evacuee reception point IRON11 (primary position E1 or alternate position E2)**
- **Escort the evacuee to the Assembly Area IRON (position F2), passing by the assigned entry route in F1.**



OPERATION ORDER: SITUATION

**BRAVO
AIRDROP INSERTION**

**CHARLIE
ASSEMBLY POINT**

**STUDY THE MAP IN ADVANCE
AND BE SURE EACH MEMBER
KNOWS WHERE IS LOCATED
CHARLIE**



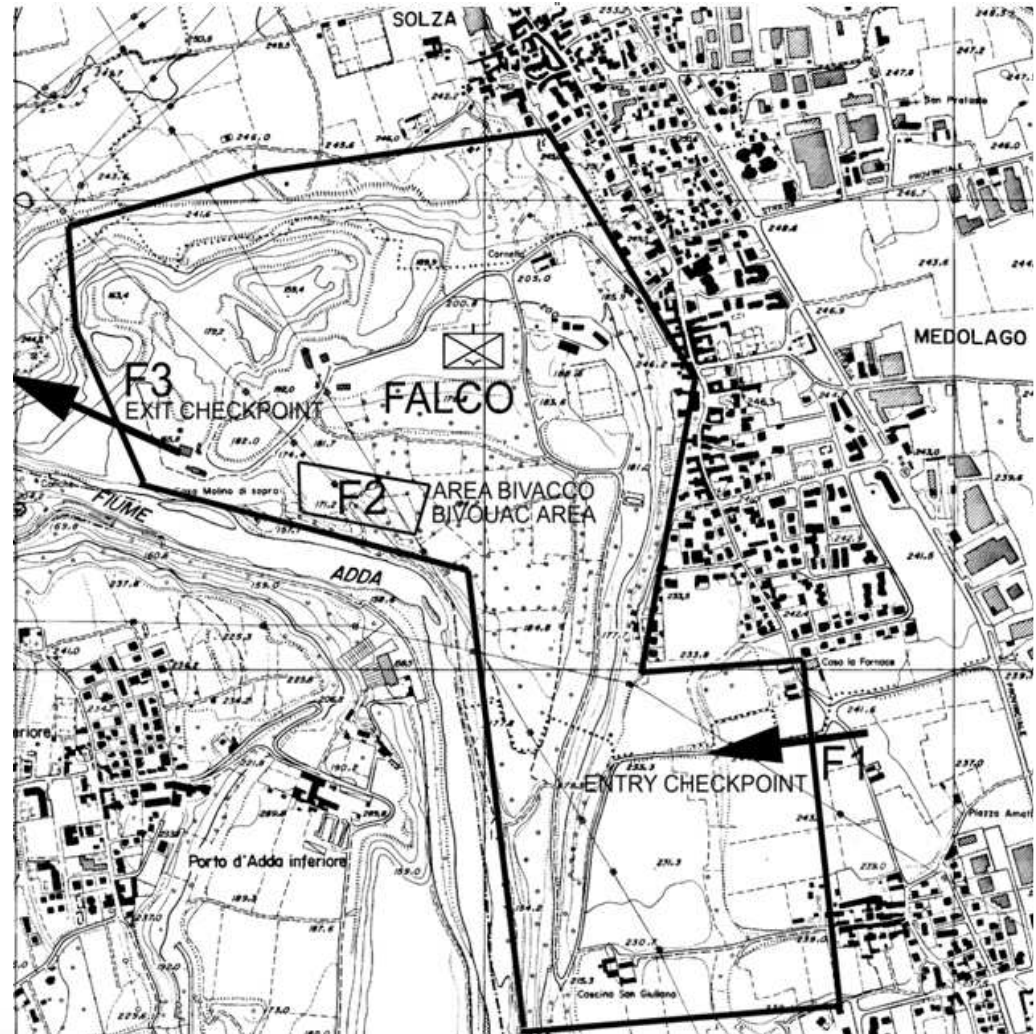


OPERATION ORDER: SITUATION

**FOXTROT
ASSEMBLY AREA “IRON”**

**FOLLOW STRICTLY
THE ENTRY/EXIT PATHS**

**YOU WILL STAY FOR THE NIGHT
IT IS CONSIDERED A SAFE AREA
(SO SLEEP)**





OPERATION ORDER: SIGNAL

- Primary Frequency 28.450 MHz, Alternate 29.750 MHz
- Nighttime challenge 3 red flashes (individual flashlight), password 2 red flashes.
- Challenge: JULIET
Password: ROMEO
- Authentication table
- Frequenza di lavoro 28.450 MHz, di riserva 29.750 MHz
- Parola d'ordine notturna 3 lampi rossi / controparola notturna 2 lampi rossi
- Parola d'ordine JULIET / controparola ROMEO
- Tabella di autenticazione

READ CAREFULLY OPERATION ORDERS!!!



LOMBARDIA 2008

Gara Internazionale Per Pattuglie Militari

International Military Patrol Competition

3.

ORGANIZATION OF THE DIRECTION OF THE EXERCISE

**BRIEFING OPERATIVO
OPERATION BRIEFING**



Organization of D.E. SAFETY ISSUES

- One mobile phone per patrol is mandatory,
 - Emergency numbers are reported on the check form
- In the event of an emergency you may also contact the nearest trial.
- Move ONLY on roads and trails. Never leave the indicated itinerary. Never cross forbidden areas.
- Un telefono cellulare per pattuglia è obbligatorio.
 - Numeri di emergenza sono indicati sul testimone
- In caso di emergenza contattare anche la prova più vicina.
- Muovere SOLO su strade o sentieri. Non abbandonare mai l'itinerario prescritto. Non attraversare mai aree proibite.



Organization of D.E. SAFETY ISSUES

- There is no “enemy” personnel **ALONG** the path but only **WITHIN** some trial. Violent physical contact is forbidden.
- Use of safety equipments is mandatory when requested by organization personnel.
- Each competitor shall have a flashlight.
- Non c'è “nemico” simulato lungo il percorso ma solo **ALL'INTERNO** di alcune prove. Contatto fisico violento è proibito.
- Uso di equipaggiamenti di sicurezza è obbligatorio quando richiesto dall'organizzazione
- Una torcia elettrica è obbligatoria



LOMBARDIA 2008

**Gara Internazionale Per Pattuglie Militari
International Military Patrol Competition**

4.

PRESCRIPTIONS PRESCRIZIONI

**BRIEFING OPERATIVO
OPERATION BRIEFING**



Prescriptions: TIMINGS

■ It is responsibility of the competitors, AT EACH TRIAL:

- Arriving on exercise, obtain check form signed with time stamp
- read CAREFULLY the instructions
- Leaving exercise, get back the check form. It is marked with departure time ONLY if you stand in queue waiting for the exercise.

■ E'responsabilità dei concorrenti AD OGNI PROVA:

- Far segnare il tempo di arrivo sul testimone
- Leggere ATTENTAMENTE le istruzioni
- Lasciando l'esercizio, riprendere il testimone. Questi sara' marcato con il tempo di ripartenza solo in caso di neutralizzazione



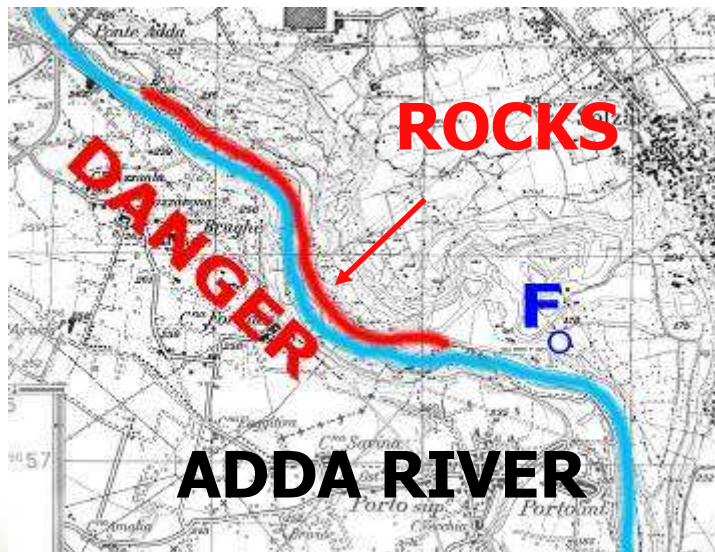
Prescriptions: COMPETITOR TASKS

- The time of the trial is INCLUDED in the total competition time.
- Trial form indicate the time out for the test. If the trial sheet is returned after the time indicated, the score will be zero
- The helmet shall be worn throughout the competition.
- The rucksack/equipment shall be at least 10 kg. throughout the competition.
- If the safety rules are violated the patrol shall be disqualified.
- Il tempo di prova è INCLUSO nel tempo di gara
- I fogli di prova riportano l'ora di riconsegna. Se il foglio è consegnato dopo l'ora indicata il punteggio sarà zero
- L'elemento va indossato durante tutta la gara
- Lo zaino e l'equipaggiamento devono pesare almeno 10 kg. Durante tutta la gara.
- Una violazione delle norme di sicurezza porta alla squalifica

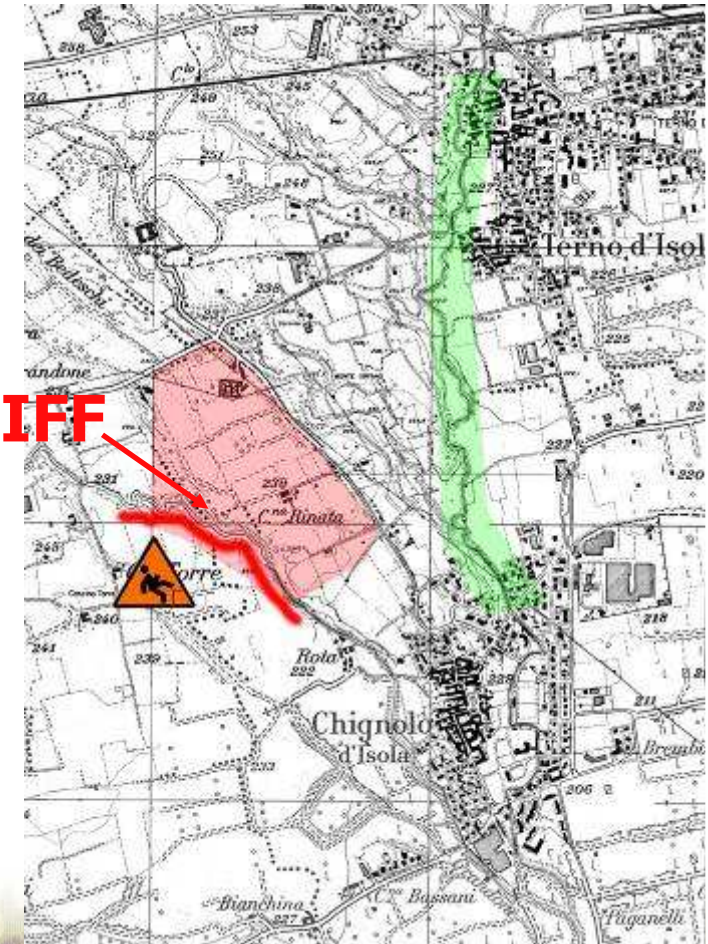


NO ENTRY ZONES ZONE INTERDETTE

- Some areas are DANGEROUS
STRICTLY FORBIDDEN TO ENTER
- Alcune aree sono pericolose
ASSOLUTO DIVIETO DI ENTRATA



CLIFF





CAMPI COLTIVATI SOWN LAND



**NON CALPESTARE
COLTIVAZIONI**

**DO NOT WALK
ON PLANTS**



**YES
Roads
paths
boundaries**

**NO
SOWN LAND**



FERMARSI STOP ENTERING

- Non entrare in proprietà private
- Do not enter in private properties
- Fettucciato delimita posti dove non si deve entrare
- Red/white ribbons close some places where you shall not enter





CARTINE MAPS

- **MAP 1 - B&W A3**

Istituto Geografico Militare IGM 25.000 (European Datum 50)
ALFA-> INDIA with coordinates related to this map

- **MAP 2 - COLOR A4**

LOCAL MAP WGS 84

INDIA -> END with coordinates related to this map

- **BE CAREFULLY, some 150 mts difference !!!!!**

- **USE THE COORDINATES TO THE PROPER MAP**



START PARTENZA

■ ALFA

GET THE COACH
TRASPORTO CON PULLMAN

TEAM 1 - 13 22.00
IN FRONT OF DRUGSTORE/FARMACY

TEAM 14 - 26	22.40	AREA FESTE
TEAM 27 - 39	23.20	AREA FESTE
TEAM 40 - 56	24.00	AREA FESTE

CINEMA
you are here



ALFA